

## 3D Figures - Safeplay Pets Maxi

### Applications

The animal figures are handmade from EPDM-coated rubber granules bonded with polyurethane glue and are used in recreational areas such as playgrounds, city parks and green spaces. They create places for play and relaxation. They can be used both as an element for practicing balance and agility and as a place for integration. They look best when placed in groups on a safe surface or grass. They are made of materials that can be recycled after use.

### Materials

Rubber granulate:	recycled SBR rubber granulate and filler
Binder:	polyurethane binders
Surface granules:	coloured EPDM granules from the manufacturer's colour palette

### Features

Colour:	depending on the colour of the EPDM granules (slight colour differences possible)
Surface:	smooth with open pores

### Dimensions/properties

Weight approx.:	Maxi +/-330kg
Tolerance:	+/-5% product made by hand, may vary slightly

**Testing** Product certified according to the standard EN 1176-1:2017

**Age group** 2-12 years (children under adult supervision)

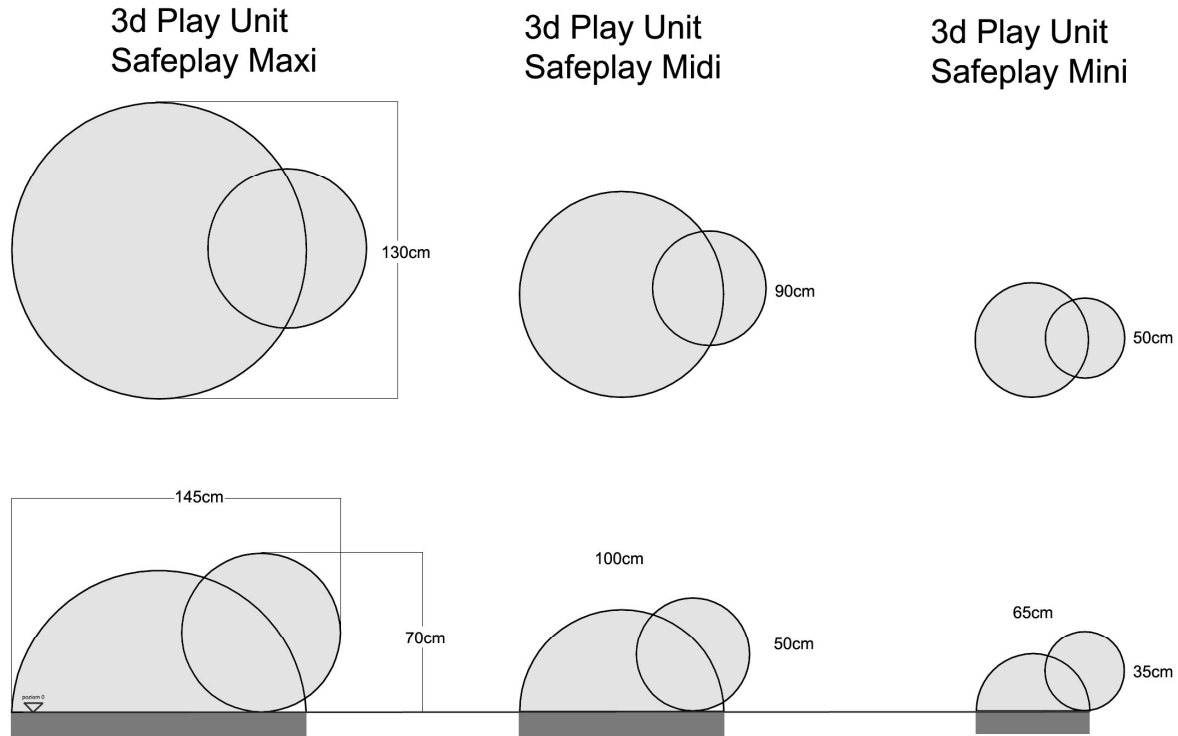


## Installation

Installation takes place on the base layer, which must be stable and frost-resistant. The figure is glued to the C25-30 concrete foundation using polyurethane adhesive.

Note: Delivery includes the animal figure (adhesive optional). Self-installation is anticipated.

Special care should be taken in case of incomplete assembly, disassembly or maintenance.



Concrete foundation C25 / 30 15cm

\* assembly with glue

\* dimensions given are without protruding parts such as: feelers, feet, etc.

[www.safeplay.pl](http://www.safeplay.pl)

Note: For a 70cm high figure, a safe surface, minimum turf soil, must be provided in the fall zone.

## Maintenance

Dirt is removed on an ongoing basis with a soft brush or Hoover.

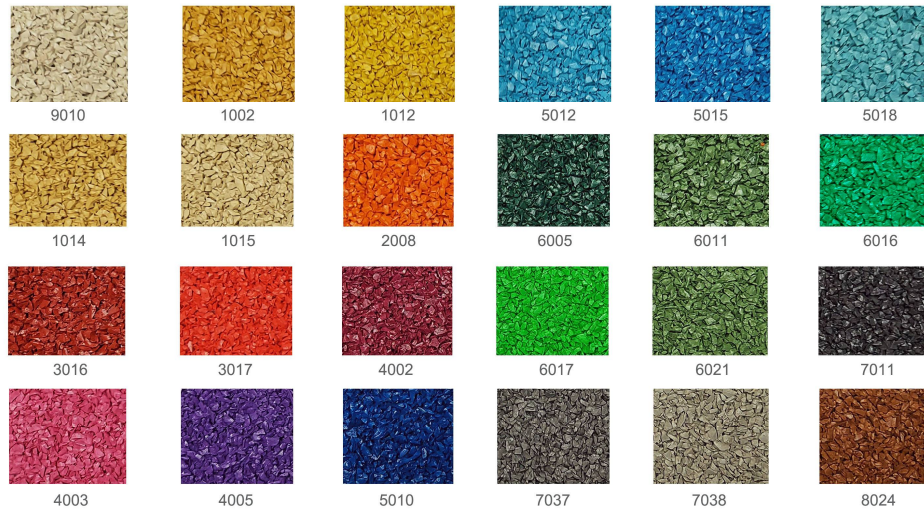
If organic growth or moss appears on the surface due to weather conditions, cleaning with water using a garden washer is recommended, without the use of chemicals. Please note that the water pressure must not be too high. The distance from the water jet to the surface should be at least 20 cm and the water temperature should not exceed 60 ° C.

## Inspection of the equipment

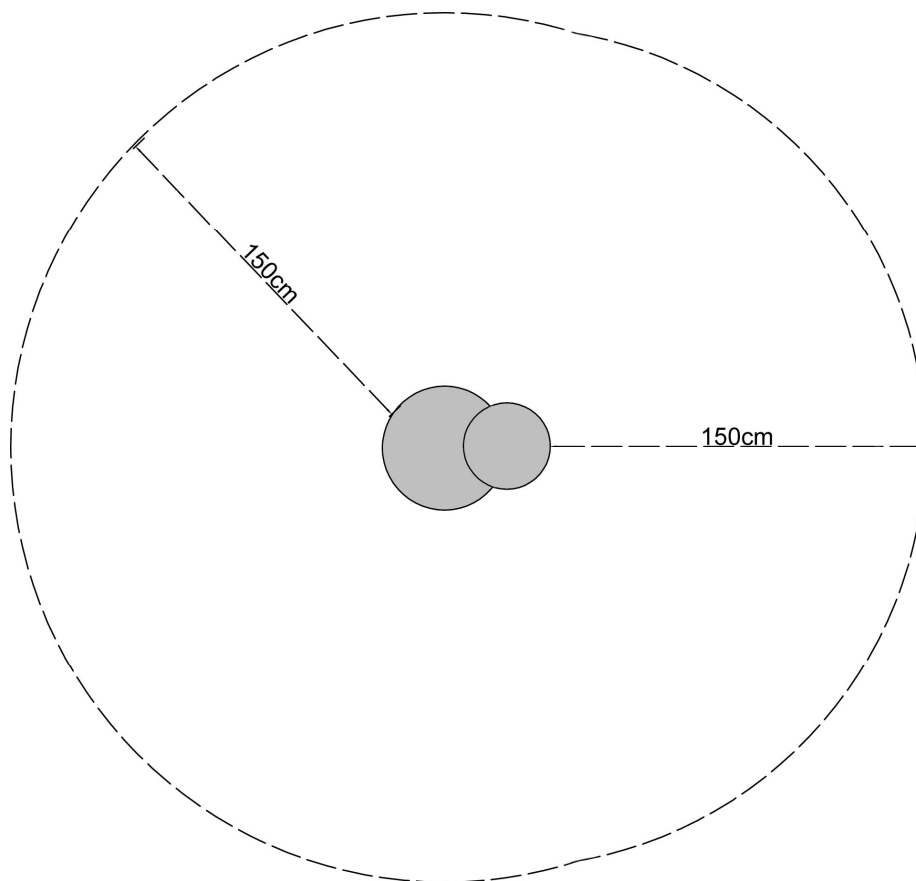
To ensure safety, the product should be visually inspected by visual inspection at least once every seven days. During this period, the product should be checked for dirt, loose parts and correct anchoring. The annual inspection should include a functional check such as a weekly check with a record of the overall condition of the product.



**RAL colours of EPDM granules (illustrative photo - colours may vary slightly)**



**Safe area**



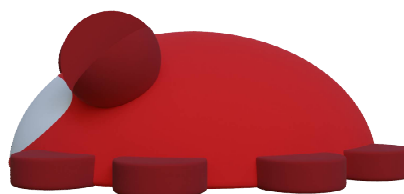
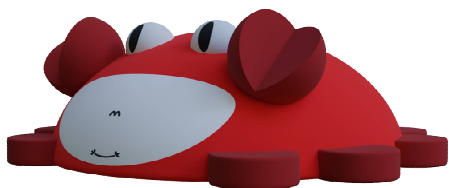
**Note:** The product can be set up in various configurations; when a group of several pieces is set up next to each other and their WSU  $\leq 150$  cm, the zone is 150 cm and is always determined from the outermost part of the figure.



Ladybird



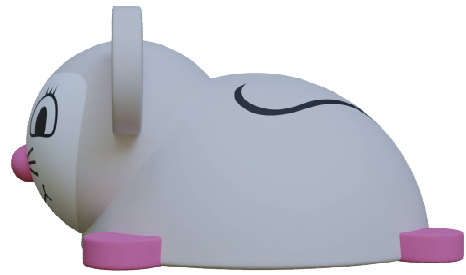
Cat



Crab



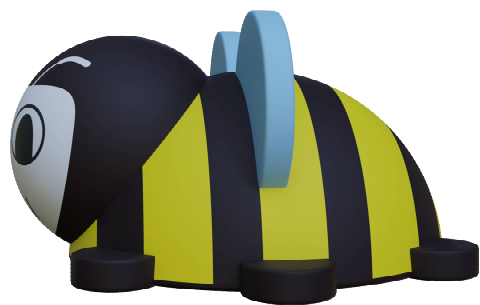
Lion



Mouse



Piggy



Bee